

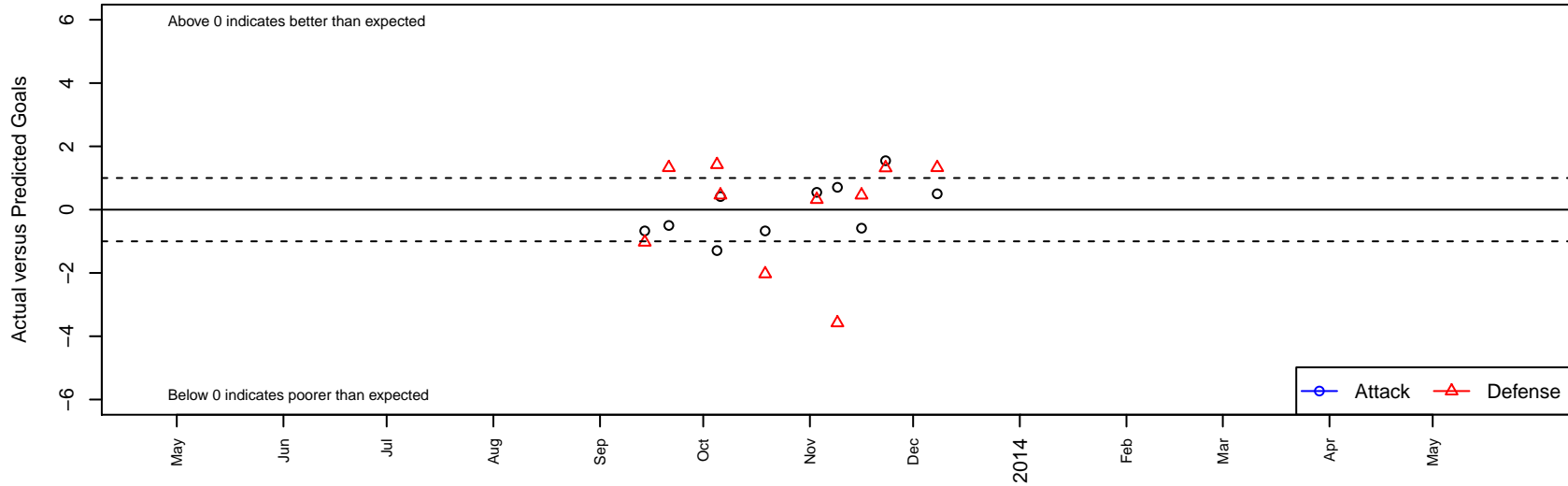
Cal Blues 01 G00

, CAN
 G00 total strength=1374
 attack=6.76 defense=7.92
 alt names used:
 Cal Blues 01G

Venues played:
 NorCal Premier F11 – Region 6 U13



Cal Blues 01 G00
 Dots are actual minus expected GF (blue circles) and GA (red triangles).
 Blue line is smoothed change in attack strength. Red is smoothed change in defense strength.



	date	home		away		venue	pred.home	pred.away
11042	2013-12-08	Cal Blues 01 G00	1	FC Elk Grove 01 Navy G00	0	NorCal Premier F11 – Region 6 U13	0.50	1.33
10874	2013-11-23	Davis Legacy 01 Dynamite G00	1	Cal Blues 01 G00	2	NorCal Premier F11 – Region 6 U13	2.32	0.45
10773	2013-11-16	Cal Blues 01 G00	0	Placer United 01 Red G00	1	NorCal Premier F11 – Region 6 U13	0.59	1.46
10667	2013-11-09	Sacramento United Extreme Red G00	5	Cal Blues 01 G00	2	NorCal Premier F11 – Region 6 U13	1.42	1.29
10612	2013-11-03	Cal Blues 01 G00	1	Davis Legacy 01 Dynamite G00	2	NorCal Premier F11 – Region 6 U13	0.45	2.32
10214	2013-10-19	Cal Blues 01 G00	0	San Juan SC 01 Spirits Blue G00	3	NorCal Premier F11 – Region 6 U13	0.67	0.97
9943	2013-10-06	Placer United 01 Red G00	1	Cal Blues 01 G00	1	NorCal Premier F11 – Region 6 U13	1.46	0.59
9836	2013-10-05	Cal Blues 01 G00	0	Sacramento United Extreme Red G00	0	NorCal Premier F11 – Region 6 U13	1.29	1.42
9513	2013-09-21	FC Elk Grove 01 Navy G00	0	Cal Blues 01 G00	0	NorCal Premier F11 – Region 6 U13	1.33	0.50
9349	2013-09-14	San Juan SC 01 Spirits Blue G00	2	Cal Blues 01 G00	0	NorCal Premier F11 – Region 6 U13	0.97	0.67